



RHINO Formsaver Dowel Bar Assembly

The RHINO Formsaver Assemblies effectively address the challenge of splicing rebar in segmental concrete construction. RHINO Formsavers eliminate the need to drill holes in expensive formwork for extending dowel bars.

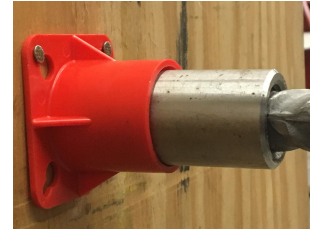
RHINO Formsaver assemblies meet ACI 318 Type 1 and 2 requirements and are approved by state department of transportations and building authorities. RHINO

Formsavers are available in sizes #4 thru #7 as a 2- part system (male DI/female DB) assembly. The coupler is friction welded to the bar, so there is no additional field assembly. The male threaded bar comes with a plastic end cap to protect the threads, and the female coupler comes with a removable metal cap to protect the interior of the coupler until final assembly.



RHINO Formsaver with FMP for Standard Couplers

RHINO also offers a "Form Mounting Plate" (FMP) in sizes #4 thru #11, which is used with our standard RS coupler to allow our customers to assemble their own long bar assemblies or last minute changes or requests.

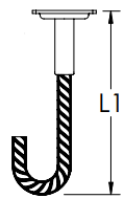
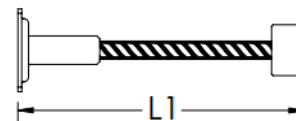
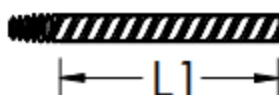
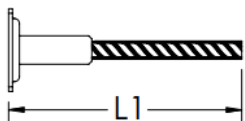


Features and Benefits

- Meets and exceeds ACI 318 Type 1 (125% Fy) and Type 2 (100% Fu)
- Meets or exceeds international building codes
- Eliminates drilling holes in formwork
- Eliminates trip hazard of protruding dowel bars
- Tapered thread is self aligning, eliminates cross threading, and is fast to install
- Maintains structural integrity and strength of rebar across construction joints

Typical Applications and Examples

- Bridge deck segmental construction
- Slurry Walls, columns to beams, core wall, shear wall
- Crane and temporary construction openings
- Stadiums, high rise buildings, wastewater treatment plants, parking garages



L1 is a custom length depending on the project application